

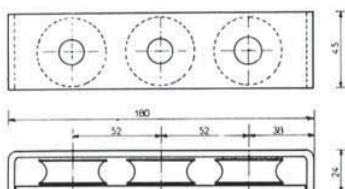
► FLATWARE LEAD BLOCKS ALLOY DECK setted for screws F/90

2004

SHEAVES

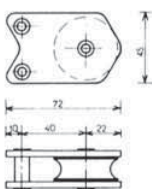
Reference	L	Sizes	Material	Number	Fixation
-----------	---	-------	----------	--------	----------

/ For halyard \varnothing 14



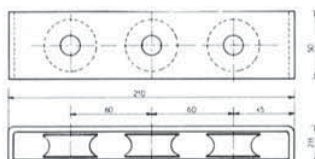
48011422040	128	\varnothing 40 x 15	Injected Delrin	2	\varnothing 6 F/90
48031423040	180	\varnothing 40 x 15	Injected Delrin	3	\varnothing 6 F/90

For halyard \varnothing 14, \varnothing 16



48011421040	72	\varnothing 40 x 15	Injected Delrin	1	\varnothing 6 F/90
48031421040	72	\varnothing 40 x 17	Machined Delrin	1	\varnothing 6 F/90

For halyard \varnothing 16



48031422048	150	\varnothing 48 x 17	Machined Delrin	2	\varnothing 6 F/90
48031423048	210	\varnothing 48 x 17	Machined Delrin	3	\varnothing 6 F/90
48031424048	270	\varnothing 48 x 17	Machined Delrin	4	\varnothing 6 FR/90

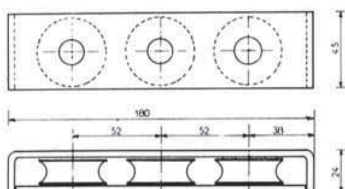
► FLATWARE LEAD BLOCKS ALLOY DECK setted for screws F/90

2004

SHEAVES

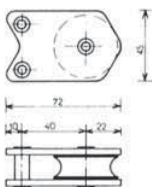
Reference	L	Sizes	Material	Number	Fixation
-----------	---	-------	----------	--------	----------

/ For halyard \varnothing 14



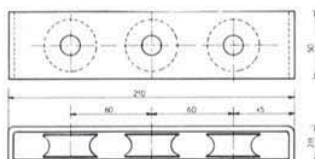
48011422040	128	\varnothing 40 x 15	Injected Delrin	2	\varnothing 6 F/90
48031423040	180	\varnothing 40 x 15	Injected Delrin	3	\varnothing 6 F/90

For halyard \varnothing 14, \varnothing 16



48011421040	72	\varnothing 40 x 15	Injected Delrin	1	\varnothing 6 F/90
48031421040	72	\varnothing 40 x 17	Machined Delrin	1	\varnothing 6 F/90

For halyard \varnothing 16



48031422048	150	\varnothing 48 x 17	Machined Delrin	2	\varnothing 6 F/90
48031423048	210	\varnothing 48 x 17	Machined Delrin	3	\varnothing 6 F/90
48031424048	270	\varnothing 48 x 17	Machined Delrin	4	\varnothing 6 FR/90

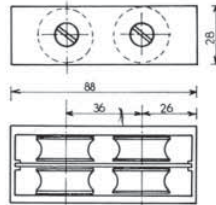
► **FLATWARE LEAD BLOCKS ALLOY DECK** setted for screws F/90
with stainless steel screws

2004

SHEAVES

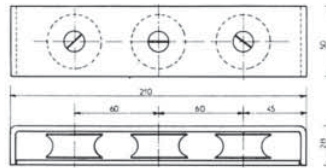
Référence L Sizes Material Number Fixation

For halyard \varnothing 12



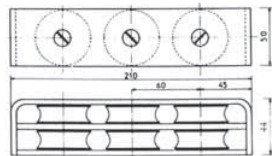
48012424026 88 \varnothing 26 x 13 Machined Delrin 4 F/90 M6 x 60

For halyard \varnothing 16



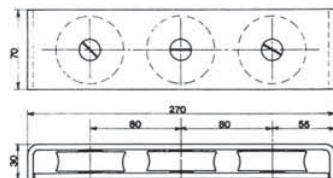
48012423048 210 \varnothing 48 x 17 Machined Delrin 3 F/90 8.60

48012424048 270 \varnothing 48 x 17 Machined Delrin 4 F/90 8.60



48012426048 210 \varnothing 48 x 17 Machined Delrin 6 F/90 M8 x 70

For halyard \varnothing 18



48012422060 190 \varnothing 60 x 19 Injected Delrin 2 F/90 M10 x 80

48012423060 270 \varnothing 60 x 19 Injected Delrin 3 F/90 M10 x 80

48012424060 350 \varnothing 60 x 19 Injected Delrin 4 F/90 M10 x 80

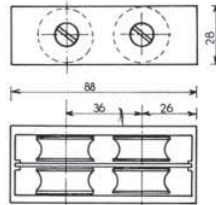
► **FLATWARE LEAD BLOCKS ALLOY DECK** setted for screws F/90
with stainless steel screws

2004

SHEAVES

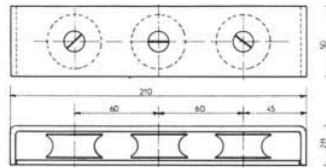
Référence L Sizes Material Number Fixation

For halyard \varnothing 12



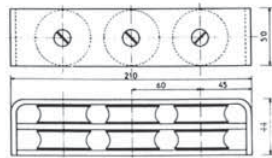
48012424026 88 \varnothing 26 x 13 Machined Delrin 4 F/90 M6 x 60

For halyard \varnothing 16



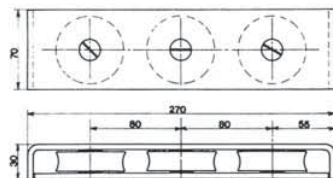
48012423048 210 \varnothing 48 x 17 Machined Delrin 3 F/90 8.60

48012424048 270 \varnothing 48 x 17 Machined Delrin 4 F/90 8.60



48012426048 210 \varnothing 48 x 17 Machined Delrin 6 F/90 M8 x 70

For halyard \varnothing 18



48012422060 190 \varnothing 60 x 19 Injected Delrin 2 F/90 M10 x 80

48012423060 270 \varnothing 60 x 19 Injected Delrin 3 F/90 M10 x 80

48012424060 350 \varnothing 60 x 19 Injected Delrin 4 F/90 M10 x 80