

▶ HINGED MAST STEPS

MAST SECTIONS F35, F50, F67, F78, F101

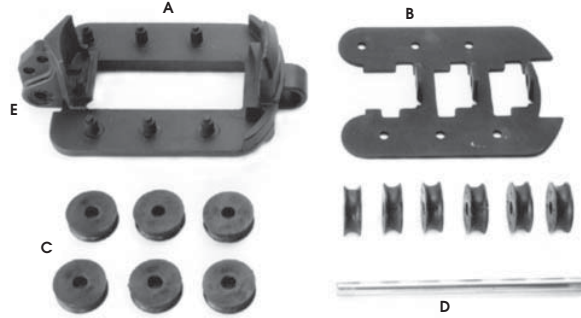


2004

COMPONENTS



Mast bases

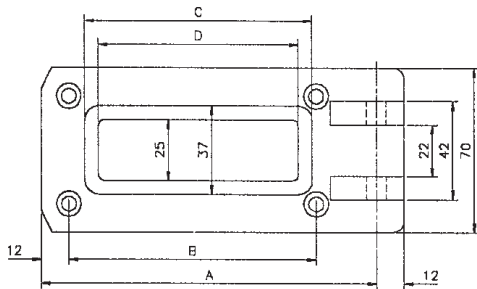


MAST BASES with provision for 6 halyards

Profiles	Complete set	a	b	Qt	c	Qt	d	Qt
		Base	Plate		Sheaves		Pin	
F35 & F50	36016200355	36016400353	36083200353	1	48510271015	12	40020108110	1
F67 & F101	36016200675	36016400673	36083200673	1	48510301015	12	40020108138	1

MAST STEPS

Profiles	Complete set	Cast step	Pin	Qt	Washers	Qt	Split pin	Qt
F35 & F50	36006200355	36056200353	40020208045	1	28601008000	2	28809000015	1
F67 & F101	36006200675	36056200673	40020208045	1	28601008000	2	28809000015	1



MAIN DIMENSIONS

Profiles	A	B	C	D	Total thickness
F35 & F50	121	84	74	64	40
F67, F101 F78	145	108	98	88	38

► MAST STEPS



I180 à NG86



NG105

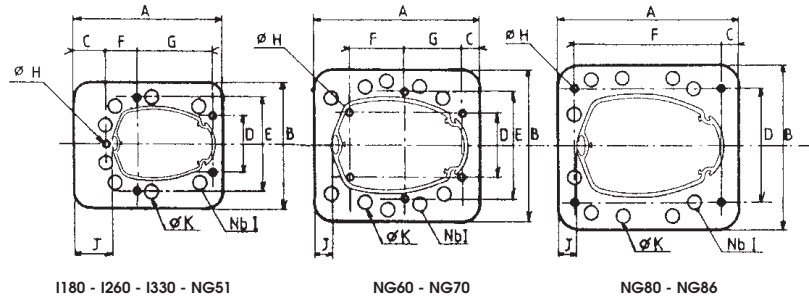
MAST STEPS

May be fitted with several halyard blocks and one vang bale.

Profiles	a	b	QTE	c	QTE	Pin Ø ø
	base	bale		blocks		
I137	36031201353	47505558124	1	SC58 - SS58	8	Ø 12
I180 - I260	36031401803	47505558124	1	SC58 - SS58	8	Ø 12
I330 - NG51	36031433513	47505558124	1	SC58 - SS58	8	Ø 12
NG60 - NG70	36031460703	47505558124	1	SC58 - SS58	10	Ø 12
NG80 - NG86	36031480863	47505558124	1	SC70 - SS70	10	Ø 14
NG105	36031401053	47505000363	1 to 8	Articulated block		

► MAST STEPS

2004



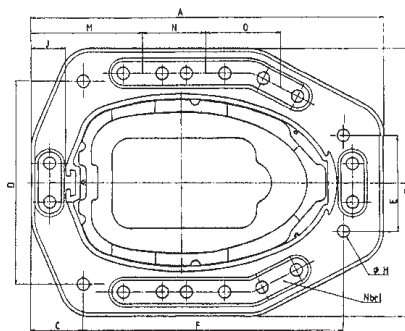
I180 - I260 - I330 - NG51

NG60 - NG70

NG80 - NG86

NG31 to NG86

Type profil	A	B	C	D	E	F	G	∅ H	Nbr I	∅ K	J	Th.
I 180	232	188	69	110	110	-	184	9	8	12	56	8
I 260	-	-	-	-	-	-	-	-	-	-	52	-
I 330	235	200	49	88	159	47	126	9	8	12	39	10
NG 51	-	-	-	-	-	-	-	-	-	-	36	-
NG 60	280	240	30	110	168	88	88	9	10	12	52	12
NG 70	-	-	-	-	-	-	-	-	-	-	42	-
NG 80	300	265	22	178	-	253	-	9	10	14	41	15
NG 86	-	-	-	-	-	-	-	-	-	-	37	-



NG105

Type profil	A	B	C	D	E	F	∅	Nbr I	J	M	N	O	Th.
NG 105	365	276	54	210	100	270	12,5	8	35	115	65	77	20