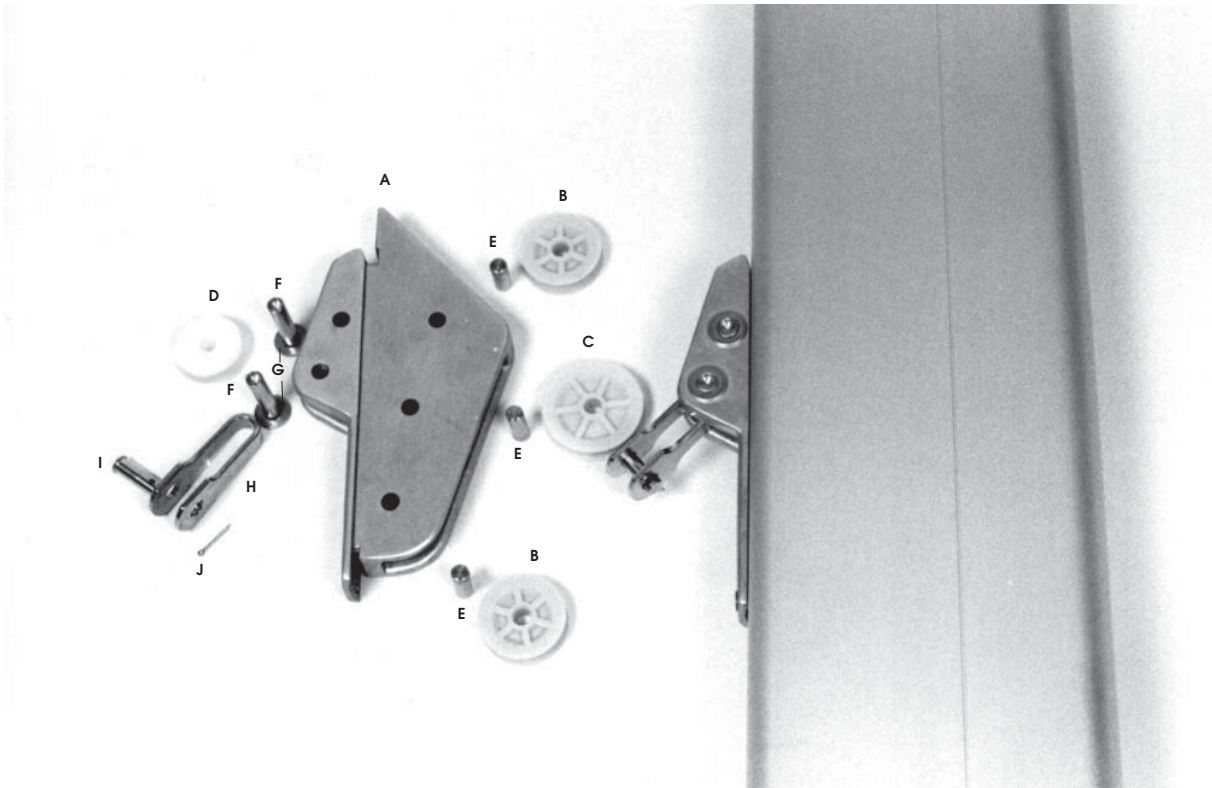


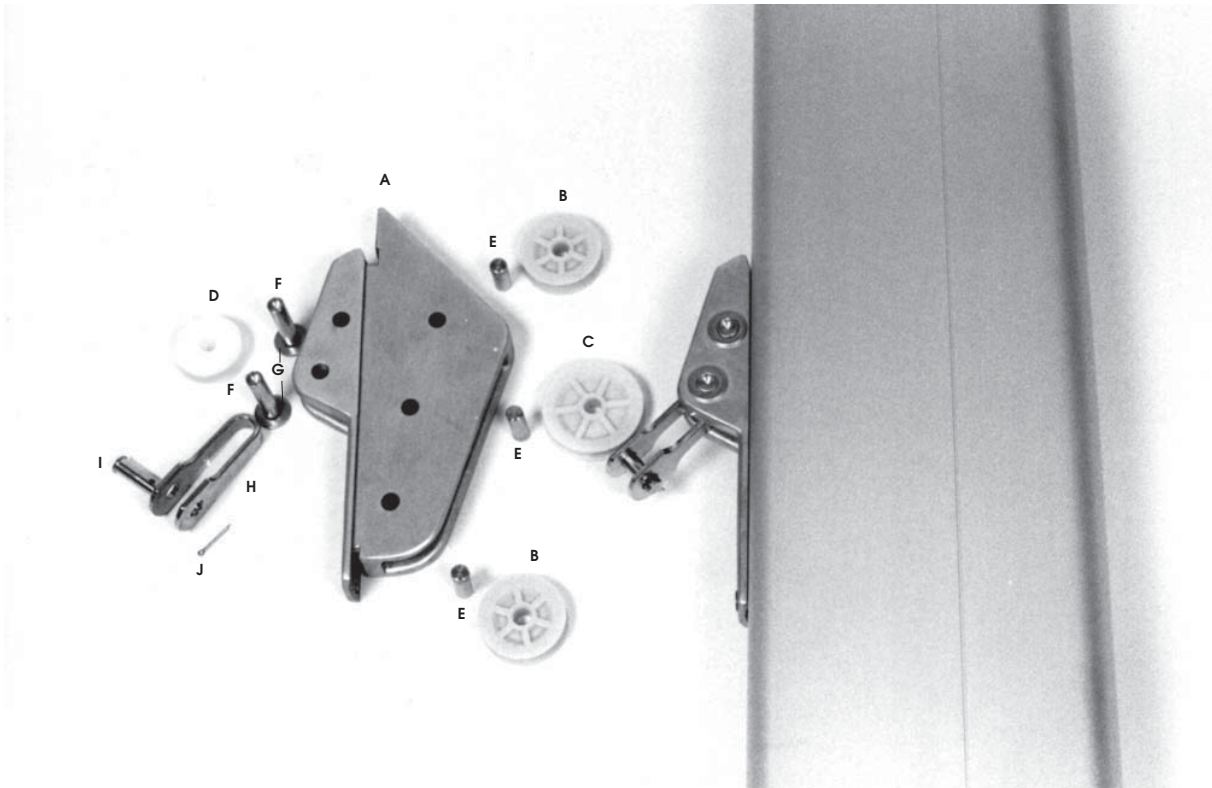
2004



|   |       | WIRE (1 x 19)<br>COMPLET FORESTAY | ø 5 mm<br>30503010055 |    | ø 6 mm<br>30503010065 |    | ø 7 mm<br>30503010075 |    |
|---|-------|-----------------------------------|-----------------------|----|-----------------------|----|-----------------------|----|
|   |       | DESCRIPTION                       | CODE                  | QT | CODE                  | QT | CODE                  | QT |
| A | _____ | FORESTAY BODY                     | 30503010003           | 1  | 30503010003           | 1  | 30503010003           | 1  |
| B | _____ | SHEAVES 50 X 14                   | 48530501415           | 2  | 48530501415           | 2  | 48530501415           | 2  |
| C | _____ | SHEAVES 60 X 14                   | 48530601415           | 1  | 48530601415           | 1  | 48530601415           | 1  |
| D | _____ | SHEAVES 40 X 15                   | 48510401515           | 1  | 48510401515           | 1  | 48510401515           | 1  |
| E | _____ | PINS Ø 10 X 28                    | 40020610028           | 3  | 40020610028           | 3  | 40020610028           | 3  |
| F | _____ | PINS Ø 10 X 46                    | 40020810046           | 2  | 40020810046           | 2  | 40020810046           | 2  |
| G | _____ | WASHERS                           | 28601010000           | 2  | 28601010000           | 2  | 28601010000           | 2  |
| H | _____ | TOGGLE                            | 41410200841           | 1  | 41410201041           | 1  | 41410201241           | 1  |
| I | _____ | TOGGLE PIN                        | 40020208024           | 1  | 40020210024           | 1  | 40020212024           | 1  |
| J | _____ | SPLIT PIN                         | 28803020180           | 1  | 28803032200           | 1  | 28803032200           | 1  |

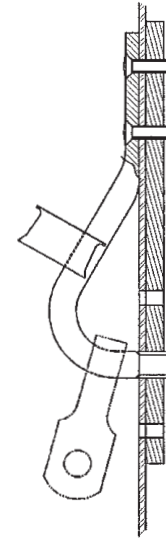
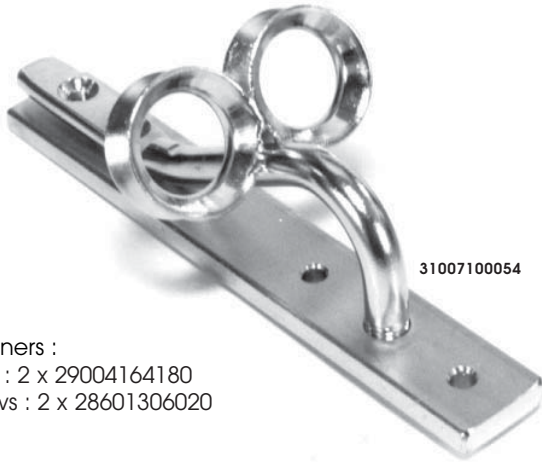
Assembly : 1x 29002248180 Stainless rivet

2004



|   |       | WIRE (1 x 19)<br>COMPLET FORESTAY | ø 5 mm<br>30503010055 |    | ø 6 mm<br>30503010065 |    | ø 7 mm<br>30503010075 |    |
|---|-------|-----------------------------------|-----------------------|----|-----------------------|----|-----------------------|----|
|   |       | DESCRIPTION                       | CODE                  | QT | CODE                  | QT | CODE                  | QT |
| A | _____ | FORESTAY BODY                     | 30503010003           | 1  | 30503010003           | 1  | 30503010003           | 1  |
| B | _____ | SHEAVES 50 X 14                   | 48530501415           | 2  | 48530501415           | 2  | 48530501415           | 2  |
| C | _____ | SHEAVES 60 X 14                   | 48530601415           | 1  | 48530601415           | 1  | 48530601415           | 1  |
| D | _____ | SHEAVES 40 X 15                   | 48510401515           | 1  | 48510401515           | 1  | 48510401515           | 1  |
| E | _____ | PINS Ø 10 X 28                    | 40020610028           | 3  | 40020610028           | 3  | 40020610028           | 3  |
| F | _____ | PINS Ø 10 X 46                    | 40020810046           | 2  | 40020810046           | 2  | 40020810046           | 2  |
| G | _____ | WASHERS                           | 28601010000           | 2  | 28601010000           | 2  | 28601010000           | 2  |
| H | _____ | TOGGLE                            | 41410200841           | 1  | 41410201041           | 1  | 41410201241           | 1  |
| I | _____ | TOGGLE PIN                        | 40020208024           | 1  | 40020210024           | 1  | 40020212024           | 1  |
| J | _____ | SPLIT PIN                         | 28803020180           | 1  | 28803032200           | 1  | 28803032200           | 1  |

**Assembly** : 1x 29002248180 Stainless rivet



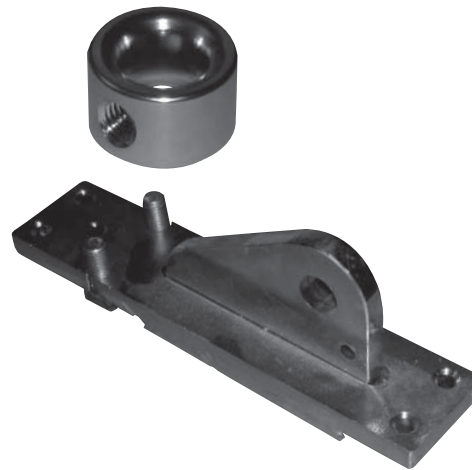
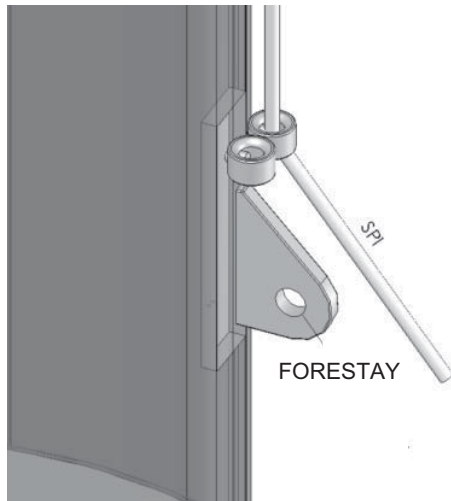
Fasteners :  
rivets : 2 x 29004164180  
Screws : 2 x 28601306020

**WITHOUT SPECTACLES**

| WIRE (1x19) | COMPLETE CODE | FORESTAY ATTACHEMENT | TOGGLE      | PIN         | PIN Ø | SPLIT PINS  |
|-------------|---------------|----------------------|-------------|-------------|-------|-------------|
| Ø 5 mm      | 31007150055   | 31007150054          | 41410200841 | 40020208024 | 8     | 28803020180 |
| Ø 6 mm      | 31007150065   | 31007150064          | 41410201041 | 40020210024 | 10    | 28803032200 |
| Ø 6-7 mm    | 31007150075   | 31007150074          | 41410201241 | 40020212024 | 12    | 28803032200 |

**WITH SPECTACLES**

| WIRE (1x19) | COMPLETE CODE | FORESTAY ATTACHEMENT | TOGGLE      | PIN         | PIN Ø | SPLIT PINS  |
|-------------|---------------|----------------------|-------------|-------------|-------|-------------|
| Ø 5 mm      | 31007100055   | 31007100054          | 41410200841 | 40020208024 | 8     | 28803020180 |
| Ø 6 mm      | 31007100065   | 31007100064          | 41410201041 | 40020210024 | 10    | 28803032200 |
| Ø 6-7 mm    | 31007100075   | 31007100074          | 41410201241 | 40020212024 | 12    | 28803032200 |



| (1x19) WIRE | COMPLETE CODE | FORESTAY ATTACHMENT | SPECTACLES  | FIXING |
|-------------|---------------|---------------------|-------------|--------|
| Ø10         | 31004020105   | 31004020104         | 43210154056 | RIVETS |
| Ø12-12,7    | 31004020106   | 31009201121         | 43210154056 | RIVETS |
| Ø14         | 31007040125   | 31007040124         | 43210154059 | RIVETS |